

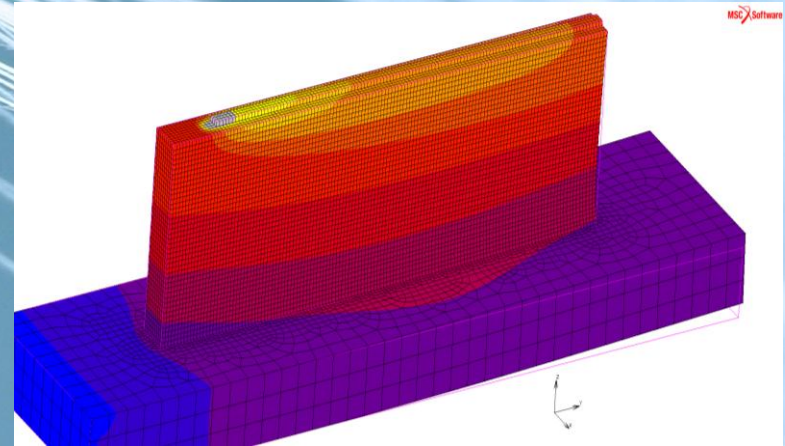
# Efficient modeling of Additive Manufacturing with Inconel 625

PhD student: Andreas Malmelöv

Duration: 2016- 2021

Funding: SSF

Advisor: Andreas Lundbäck



Research Scope:

- Development of thermo-mechanical FE- models predicting the final displacements and residual stresses of the additive manufacturing process
- Development of methods for more efficient thermo-mechanical FE-simulations
- Development of thermal and mechanical properties for Inconel 625

## LIGHTer

